

Installation Guide

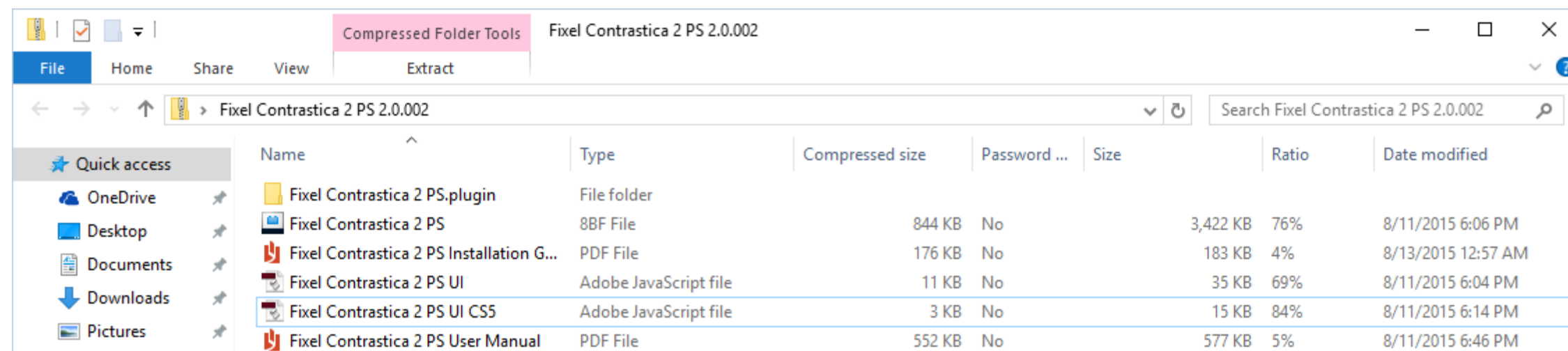
Fixel Zone Selector 1 PS

Table of Content

- Package Contents
- System Requirements
- Installation
- Plug In Installation – Photoshop CC – CC2015.5
- Plug In Installation – Photoshop CS6
- UI Installation
- Launching the User Interface
- Frequently Asked Questions

Package Contents

- Windows Plug In – ‘Fixel Zone Selector 1 PS.8bf’.
- OS X Plug In – ‘Fixel Zone Selector 1 PS.plugin’.
- Photoshop User Interface – ‘Fixel Zone Selector 1 PS UI’ (Folder).
- User Manual – ‘Zone Selector 1 PS User Manual.pdf’.
- Installation Guide – ‘Zone Selector 1 PS Installation Guide.pdf’.



System Requirements

- Operating System
 - Windows – Windows Vista 64 Bit, Windows 7 64 Bit, Windows 8 64 Bit, Windows 8.1 64 Bit, Windows 10 64 Bit.
 - OS X – OS X 10.7, OS 10.8, OS X 10.9, OS X 10.10, OS X 10.11, OS X 10.12.
- Adobe Photoshop
 - Adobe Photoshop CS6 64 Bit, Adobe Photoshop CC 64 Bit, Adobe Photoshop CC 2014 64 Bit, Adobe Photoshop CC 2015, Adobe Photoshop CC 2015.5.
- CPU
 - Intel CPU with SSE 4.1 (Recommended).
 - AMD CPU with SSE 4.1.

Installation

- Adobe removed Adobe Extension Manager from its CC 2015 products.
- Many customers had issues with ZXP installation due to corrupted Data Base or other Adobe Extension Manager issues which forced them into manual installation.
- Since manual installation is simple and fool proof Fixel Algorithms chose it as the preferred installation method until independent in house made installer is ready.
- This Installation Guide will guide you through this simple procedure which is composed of copying 2 files.
- The installation mentions <Photoshop Version> where <Photoshop Version> can be "Adobe Photoshop CS6 (64 Bit)", "Adobe Photoshop CC (64 Bit)", "Adobe Photoshop CC 2014" or "Adobe Photoshop CC 2015" and so on.
- For any issue, please contact us at fixel@fixelalgorithms.com. We'll be glad to assist you with any issues.

Plug In Installation – Photoshop CC – CC2015.5 001

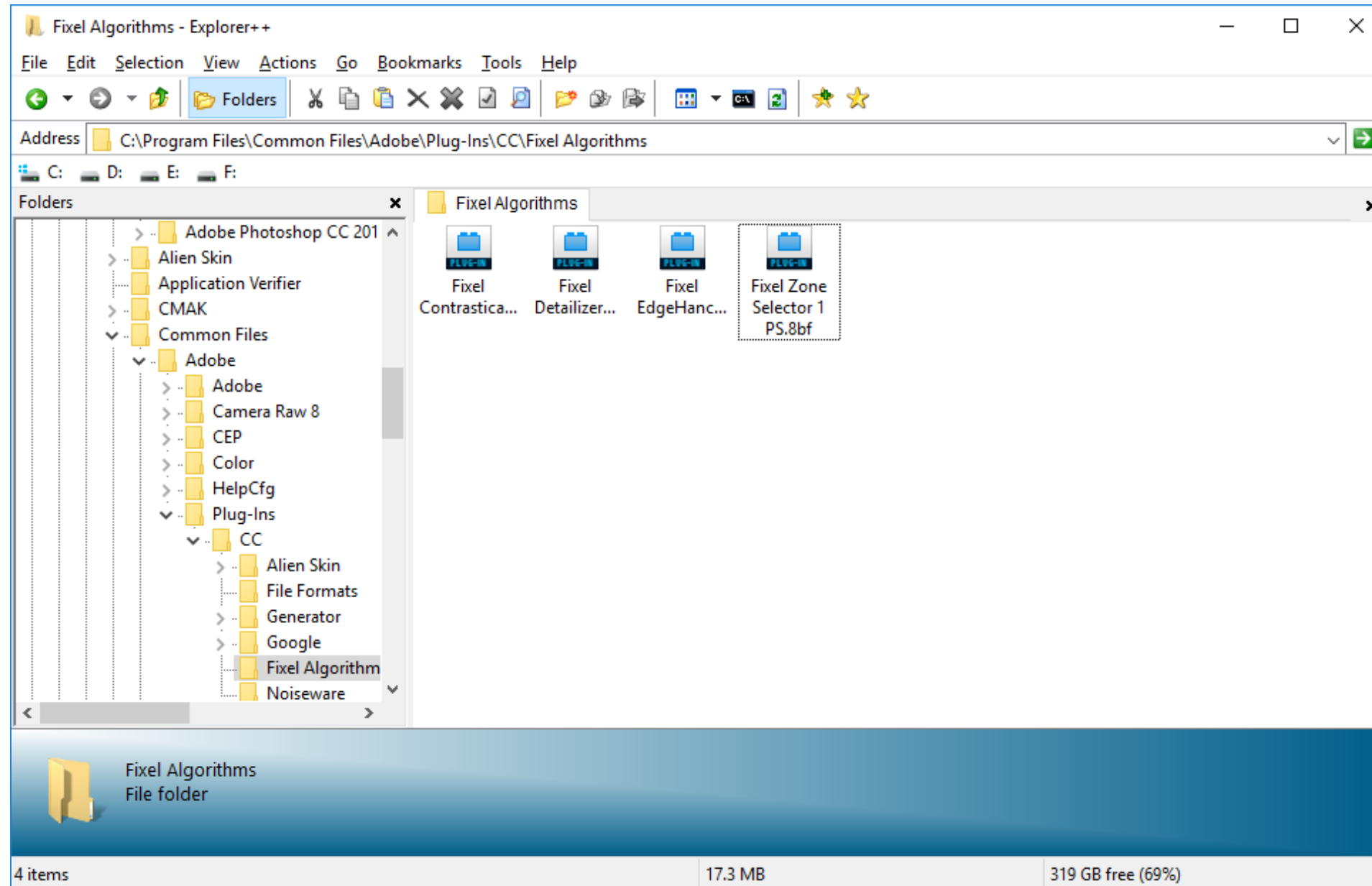
- Since the release of Adobe Photoshop CC Adobe created a Shared Plug In folder. All versions from CC and above supports this Plug In shared folder.
- From CC 2015.5 and onwards Plug In's must be located there.
- Users of CC versions are advised to move the Plug In's into the Shared Folder.
 - Windows: “Hard Drive\Program Files\Common Files\Adobe\Plug-Ins\CC\Fixel Algorithms\”.
 - macOS: “Hard Drive/Library/Application Support/Adobe/Plug-Ins/CC/Fixel Algorithms/”.
 - Please create “Fixel Algorithms” folder if needed.
- For more information
 - [FAQ: Photoshop CC 2015.5 Now Available](#).
See “Important information about plug-ins”.
 - [Locate Plug In Folders](#).

Plug In Installation – Photoshop CC – CC2015.5 002

- Make sure Photoshop is closed.
- Go to the following path:
 - “C:\Program Files\Common Files\Adobe\Plug-Ins\CC” (Windows)
 - “Hard Drive/Library/Application Support/Adobe/Plug-Ins/CC” (macOS)
- Create a Folder named “Fixel Algorithms” (Unless was created previously).
You may be required for Administrator Rights to do so.
- Go to the path created above:
 - “C:\Program Files\Common Files\Adobe\Plug-Ins\CC\Fixel Algorithms\” (Windows)
 - “Hard Drive/Library/Application Support/Adobe/Plug-Ins/CC/Fixel Algorithms/” (macOS)As can be seen in the screenshot in the next page.
- Copy the file “Fixel Zone Selector 1 PS.8bf” / “Fixel Zone Selector 1 PS.plugin” into the folder above.

Plug In Installation – Photoshop CC – CC2015.5 003

Fixel Zone Selector Plug In copied into the Fixel Algorithms folder within Adobe Photoshop Shared Plug Ins folder.



Plug In Installation – Photoshop CS6 001

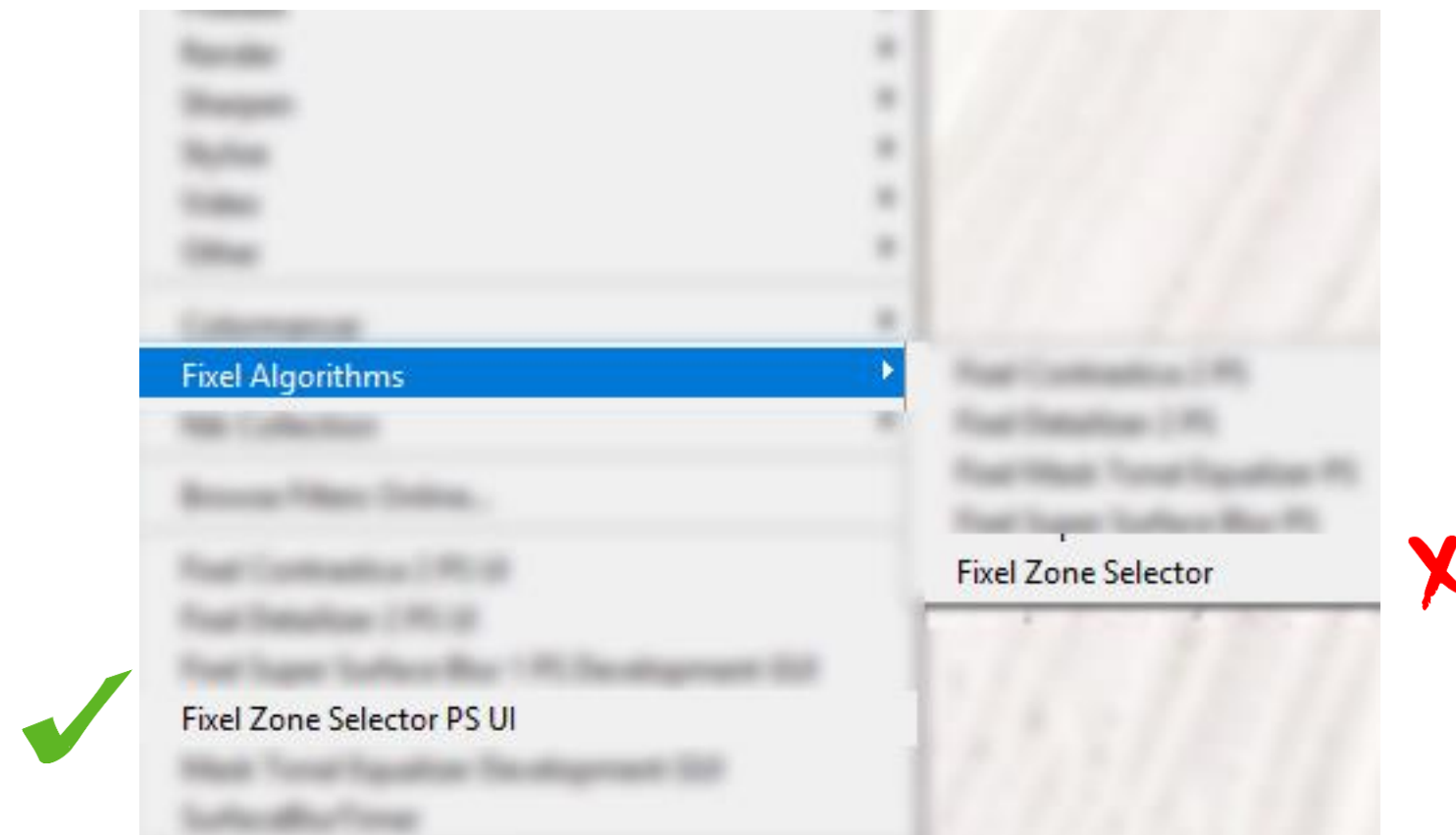
- Make sure Photoshop is closed.
- Go to the following path:
 - “C:\Program Files\Adobe\Adobe Photoshop CS6 (64 Bit)\Plug-ins” (Windows)
 - “Hard Drive/Applications/Adobe Photoshop CS6/Plug-ins” (macOS)
- Create a Folder named “Fixel Algorithms” (Unless was created previously).
You may be required for Administrator Rights to do so.
- Go to the path created above:
 - “C:\Program Files\Adobe\Adobe Photoshop CS6 (64 Bit)\Plug-ins\Fixel Algorithms”
 - “Hard Drive/Applications/Adobe Photoshop CS6/Plug-ins /Fixel Algorithms”
- Copy the file “Fixel Zone Selector 1 PS.8bf” / “Fixel Zone Selector 1 PS.plugin” into the folder above.

UI Installation 001

- Go to the following path:
“C:\Program Files\Adobe\\Presets\Scripts” (Windows)
“Hard Drive/Applications/<Photoshop Version>/Presets/Scripts” (macOS)
- Create a Folder named “Fixel Algorithms” (Unless was created previously).
You may be required for Administrator Rights to do so.
- Go to the path created above:
“C:\Program Files\Adobe\\Presets\Scripts\Fixel Algorithms”
“Hard Drive/Applications/<Photoshop version>/Presets/Scripts/Fixel Algorithms”
For instance, for the <Photoshop Version> Photoshop CC the path becomes:
“C:\Program Files\Adobe\Adobe Photoshop CC (64 Bit)\Presets\Scripts\Fixel Algorithms”
“Hard Drive/Applications/Adobe Photoshop CC/Presets/Scripts/Fixel Algorithms”
As can be seen in the screenshot in the next page.
- Copy the folder “Fixel Zone Selector 1 PS UI” into the folder above.

Launching the Plug In User Interface

- Open Photoshop.
- Open The Filter Menu.
- At the Bottom, locate “**Fixel Zone Selector 1 PS UI**” and click it.
Do Not Click “Fixel Algorithm -> **Fixel Zone Selector 1 PS**”.
 As this will not launch the UI.



Frequently Asked Questions 001

- I click on Fixel Zone Selector 1 PS and nothing happens, why?
Please click on “Filter -> Fixel Zone Selector 1 PS UI” to launch the GUI (See [Launching the Plug In User Interface](#)).
- I can't find Fixel Zone Selector 1 PS UI, what should I do?
It may be caused due to the following:
 - The UI isn't installed at the correct place – See [UI Installation](#).
 - The Photoshop version launched isn't the version the Plug In was installed to.
 - The Photoshop version used is 32 Bit while we only support 64 Bit.
- How can I know my Zone Selector Plug In version?
Launch the UI, click on the Question Mark “?” button.

Frequently Asked Questions 002

- I need support, what information should I give you?

We'd like to have the following information:

- OS Version.
 - Photoshop Version
 - CPU Model.
 - Screenshot of the Plug In's folder of Photoshop and the content of Fixel Algorithms folder.
 - Screenshot of the Scripts folder of Photoshop and the content of the Fixel Algorithms folder.
 - Screenshot of the Filter Menu within Photoshop.
- Send all to fixel@fixelalgorithms.com.